

Seismic Modeling, Migration and Velocity Inversion

Gulf of Mexico FWI

Bee Bednar

Panorama Technologies, Inc.
14811 St Marys Lane, Suite 150
Houston TX 77079

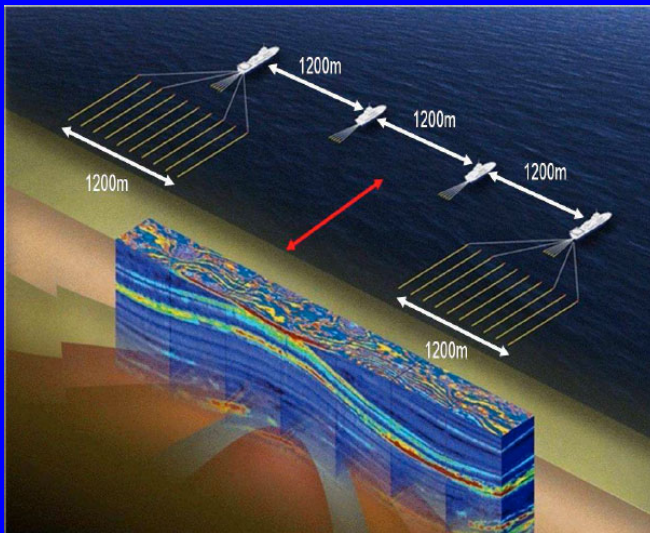
May 18, 2014



Outline

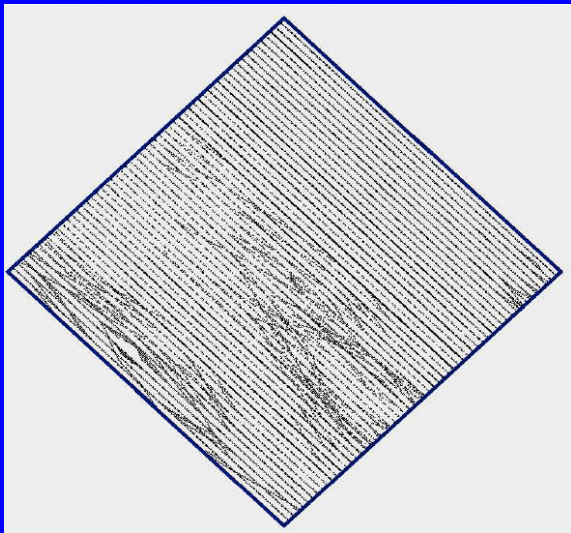
- Western Geophysical GOM 3D

WAZ Acquisition in Gulf of Mexico



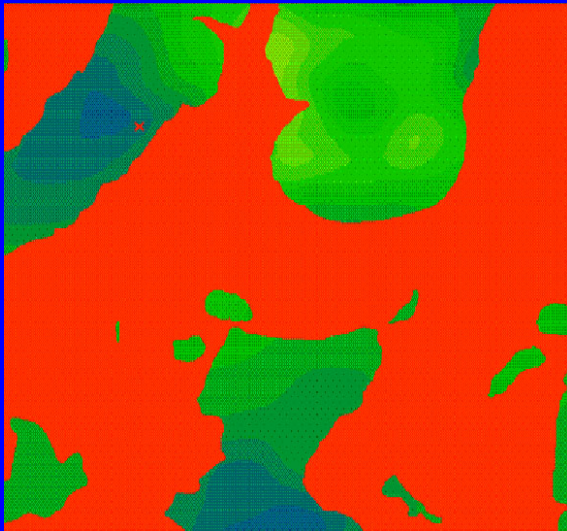
Western Geophysical WAZ Acquisition in the Gulf of Mexico.

Shot Location Footprint



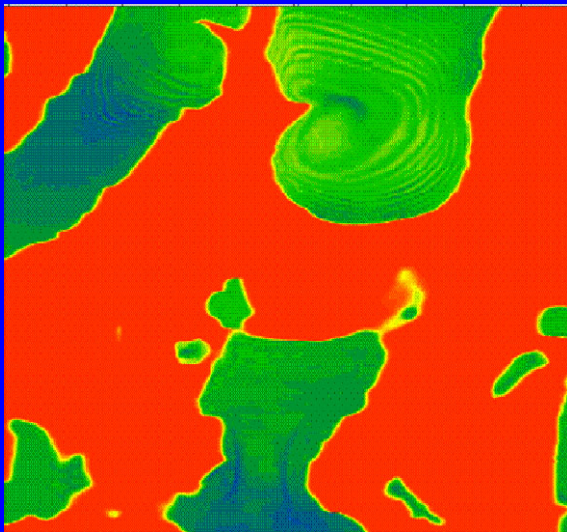
Shot Locations for the acquisition.

Tomographic Velocity



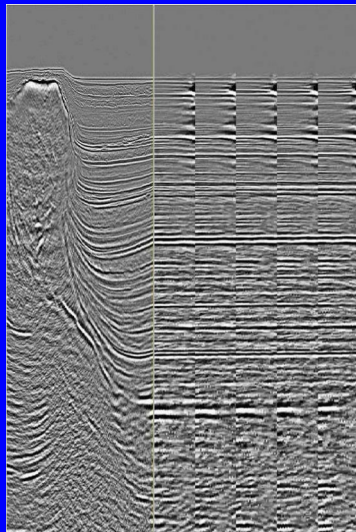
Traditional tomographic velocity update.

FWI Velocity



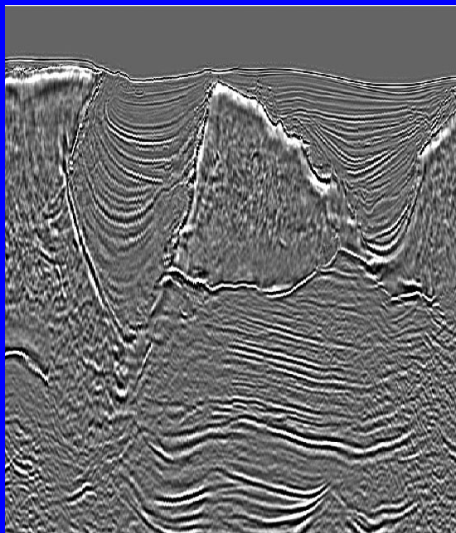
Shot Locations for the acquisition.

FWI Velocity



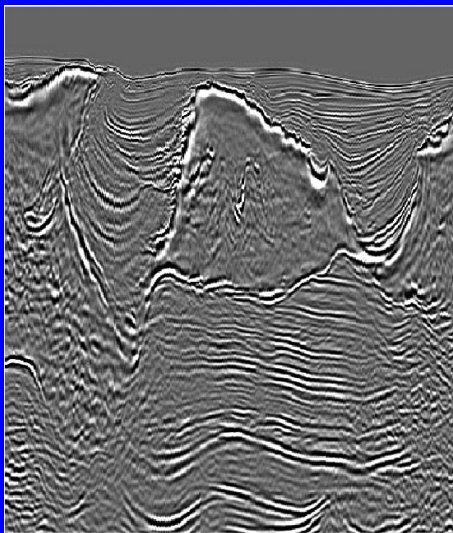
Migrated image and gathers with FWI velocity.

RTM with Tomographic Velocity



Migrated image and gathers with Tomographic velocity.

RTM with FWI Velocity



Migrated image and gathers with FWI velocity.

Questions?